

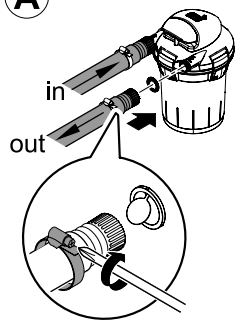


BIOPRESS 4000/6000/10000

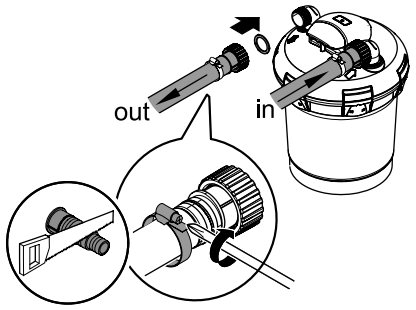
DE	Gebrauchsanleitung
GB	Operating instructions
FR	Notice d'emploi
NL	Gebruiksaanwijzing
ES	Instrucciones de uso
PT	Instruções de uso
IT	Istruzioni d'uso
DK	Bruksanvisning
NO	Bruksanvisning
SE	Bruksanvisning
FI	Käyttöohje
HU	Használati útmutató
PL	Instrukcja użytkowania
CZ	Návod k použití
SK	Návod na použitie
SI	Navodila za uporabo
HR	Uputa o upotrebi
RO	Instrucțiuni de folosință
BG	Упътване за употреба
UA	Посібник з експлуатації
RU	Руководство по эксплуатации
CN	使用说明书



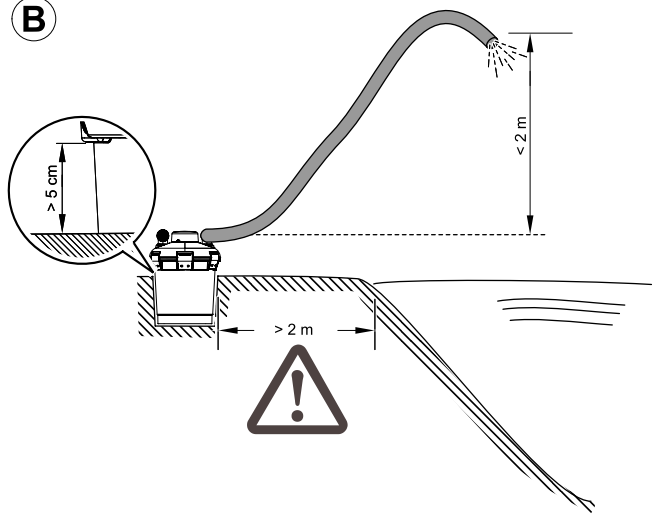
A BioPress 4000



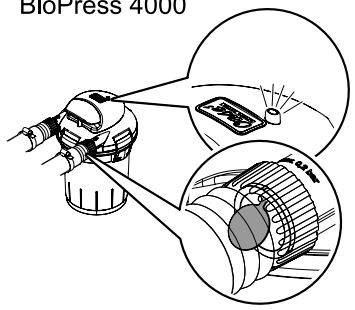
BioPress 6000 / 10000



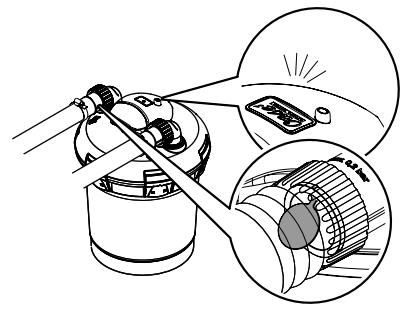
B

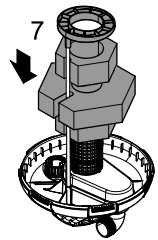
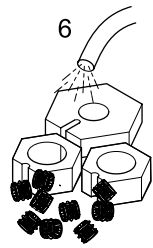
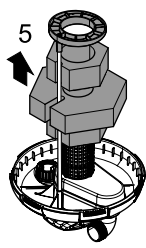
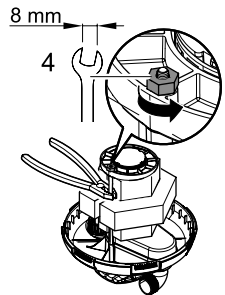
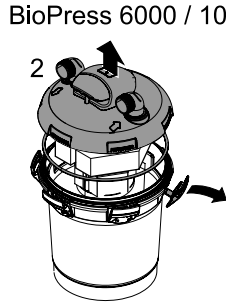
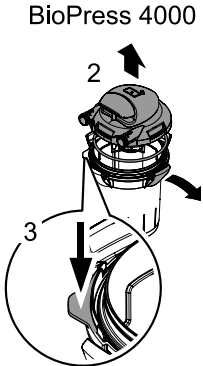
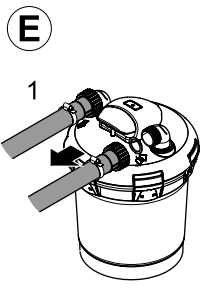
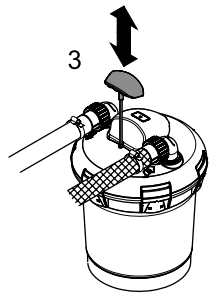
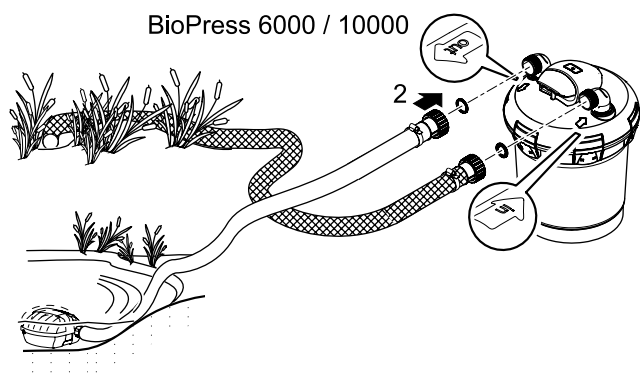
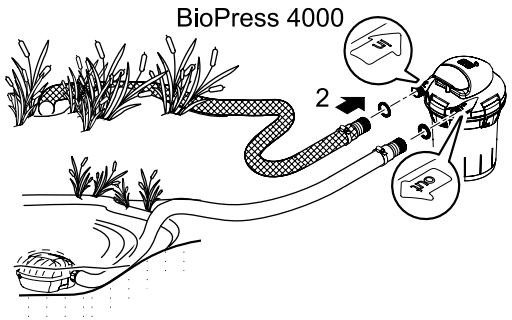
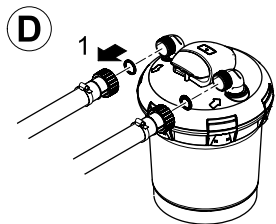


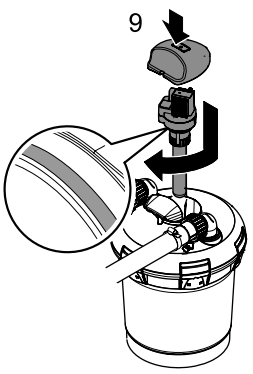
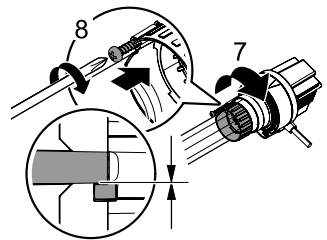
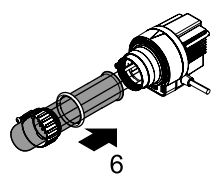
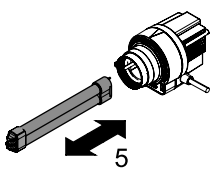
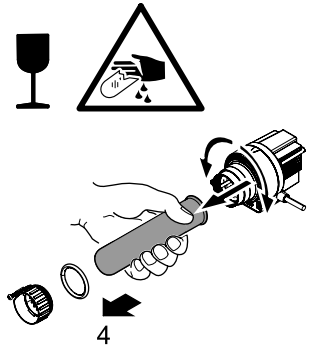
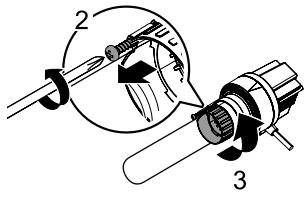
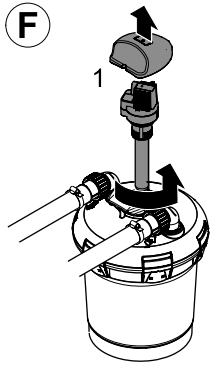
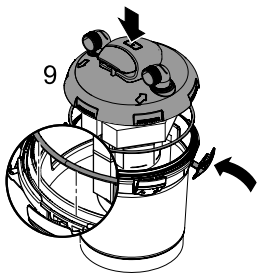
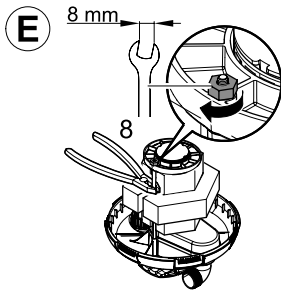
C BioPress 4000



BioPress 6000 / 10000









Translation of the original Operating Instructions

Information about these operating instructions

Welcome to OASE Living Water. You made a good choice with the purchase of the product **BioPress 4000/6000/10000**.

Prior to commissioning the unit, please read the instructions of use carefully and fully familiarise yourself with the unit. Ensure that all work with this unit is only carried out in accordance with these instructions.

Adhere to the safety information for the correct and safe use of the unit.

Keep these instructions in a safe place! Please also hand over the instructions when passing the unit on to a new owner.

Symbols

The symbols used in this operating manual have the following meanings:



Risk of injury to persons due to dangerous electrical voltage

This symbol indicates an imminent danger, which can lead to death or severe injuries if the appropriate measures are not taken.



Risk of injury to persons due to a general source of danger

This symbol indicates an imminent danger, which can lead to death or severe injuries if the appropriate measures are not taken.



Important information for trouble-free operation.

Intended use

BioPress 4000/6000/10000, in the following termed "unit", and all other parts from the delivery scope may be used exclusively as follows:

- For operation with clean water.
- For mechanical and biological cleaning of garden ponds
- Operation under observance of the technical data.

The UVC lamp installed in the unit is intended to kill algae and bacteria in the pond water. Even in small doses, its radiation is harmful for eyes and skin. Never use the UVC lamp in a defective housing or outside the housing, or any other purpose other than that intended.

The following restrictions apply to the unit:

- Never use the unit to convey fluids other than water.
- Never run the unit without water.
- Do not use for commercial or industrial purposes.
- Do not use in conjunction with chemicals, foodstuff, easily flammable or explosive substances.

Safety information

The company **OASE** has built this unit according to the state of the art and the valid safety regulations. Despite the above, hazards for persons and assets can emanate from this unit if it is used in an improper manner or not in accordance with its intended use, or if the safety instructions are ignored.

For safety reasons, children and young persons under 16 years of age as well as persons who cannot recognise possible danger or who are not familiar with these operating instructions, are not permitted to use the unit. Keep children under supervision to ensure that they do not play with the unit.

Hazards encountered by the combination of water and electricity

- The combination of water and electricity can lead to death or severe injury from electrocution, if the unit is incorrectly connected or misused.
- Prior to reaching into the water, always switch off the mains voltage to all units used in the water.

Correct electrical installation

- Electrical installations must meet the national regulations and may only be carried out by a qualified electrician.
- A person is regarded as a qualified electrician, if, due to his/her vocational education, knowledge and experience, he or she is capable of and authorised to judge and carry out the work commissioned to him/her. Working as a qualified person also includes the recognition of possible hazards and the adherence to the pertinent regional and national standards, rules and regulations.
- For your own safety, please consult a qualified electrician.
- The unit may only be connected when the electrical data of the unit and the power supply coincide. The unit data is to be found on the unit type plate or on the packaging, or in this manual.
- Ensure that the unit is fused for a rated fault current of max. 30 mA by means of a fault current protection device.
- Extension cables and power distributors (e.g. outlet strips) must be suitable for outdoor use.

- Minimum safety distance between the unit and the water: 2 m.
- Ensure that the power connection cable cross section is not smaller than that of the rubber sheath with the identification H05RN-F. Extension cables must meet DIN VDE 0620.
- Protect the plug connections from moisture.
- Only plug the unit into a correctly fitted socket.

Safe operation

- Never operate the unit if either the electrical cables or the housing are defective!
- Do not carry or pull the unit by its electrical cable.
- Route all cables such that damage is excluded and nobody can trip over them.
- Never open the unit housing or its attendant components, unless this is explicitly required in the operating instructions.
- Only use original spare parts and accessories for the unit.
- Never carry out technical modifications to the unit.
- Only have repairs carried out by customer service points authorised by OASE.
- The power connection cables cannot be replaced. When the cable is damaged, the unit or the component needs to be disposed of.
- Only operate the unit if no persons are in the water!
- The unit, the connections and plugs are not water-proof and must not be routed or installed in water.
- Keep the socket and power plug dry.

Installation

Oase recommends hoses suitable for a minimum pressure of 1 bar.

Fig. A:

- BioPress 6000/10000: Shorten stepped hose adapters such that the connection opening coincide with the hose diameter. This helps to avoid pressure loss.
 - Push the union nuts over the stepped hose adapters, push or turn on the stepped hose adapter, and secure with the hose clips.
 - Insert the flat sealing ring or the O ring into the union nut for the black hose adapter and screw onto the pressure filter inlet.
 - Insert the flat sealing ring including the flow indicator flap for the transparent stepped hose adapter, then screw onto the pressure filter outlet.
- The cleaning effect of the pressure filter can be checked at the transparent stepped hose adapter with flow indicator flap.

Installation



Attention! Dangerous electrical voltage.

Possible consequences: Death or serious injuries.

Protective measures:

- Only operate the unit with the protection hood fitted.
- Ensure that the unit is installed water-tight with a safety distance from the water of a minimum of 2 m.

Install the unit so that it is not exposed to direct sun radiation (max. 40 °C).

Figure B:

- Place the pressure filter in a flood protected position at a distance from the pond edge of at least 2m on firm and level ground. As an alternative, the filter can also be partly buried up to approx. 5 cm below the closing clamps.
- The height difference between the filter lid and the free outlet point may be max. 2 m.
- Ensure unrestricted access to the cover to be able to carry out work on the unit.



Start-up



Attention! Dangerous electrical voltage.

Possible consequences: Death or severe injury.

Protective measures:

- Prior to reaching into the water, disconnect the power supply to all units used in the water.
- Disconnect the power plug prior to carrying out work on the unit.



Attention! Never operate the unit with a water pressure of more than 0.2 bar!

Figure C:

Important:

- Switch the pump on first, then the UVC clarifying unit.
- Do not operate the unit without water flowing through.
- The unit switches on automatically when power connection is established.

Switching on: Connect power plug to the socket.

- The control lamp is lit.
- The flow indicator flap in the transparent stepped hose adapter in the outlet moves.

Note:

- After a new installation, the unit only reaches its full biological cleaning effect after a few weeks.
- The full effect on bacteria is only reached as from a water temperature of + 10 °C.
- In the event of overheating, the installed temperature monitor switches the UVC lamp off automatically, the lamp automatically switches on again once cooled down.

Check all connections for leaks.

Switching off: Disconnect the power plug.

Maintenance and cleaning



Attention! Dangerous electrical voltage.

Possible consequences: Death or severe injury.

Protective measures:

- Prior to reaching into the water, disconnect the power supply to all units used in the water.
- Disconnect the power plug prior to carrying out work on the unit.

Note:

- Check and clean the water outlet into the pond at regular intervals.
- Clean the filters at regular intervals (e.g. every four weeks), however, at the latest when cloudy or dirty water from the water outlet returns to the garden pond.
- Carry out quick cleaning first. Should this prove insufficient, clean the entire unit.
- A blocked filter could lead to leakages.
- Never use chemical cleaning agents.

Quick cleaning (D)

- Switch off the filter pump.
- Remove hose from the filter outlet by turning off the union nut (1).
- Remove hose from the filter inlet by turning off the union nut and screw on the filter outlet (2).
- Screw a dirt drain hose with stepped hose adapter on the filter inlet.
- Switch on the filter pump.
- Vigorously pull on the cleaning handle and „pump“ several times (3). In this manner, the foam filters are mechanically cleaned until the draining water is clear.
- Switch off the filter pump.
- Remove the dirt drain hose and correctly reconnect the hoses for normal operation (Figure A).

Full cleaning (E)

- Disconnect all hoses by turning off the union nuts (1).
- Open the closing clamps of the filter container (2).
BioPress 4000: Hold the filter container at the hold-down element and lift off cover including the foam filter package (3).
BioPress 6000/10000: Lift off cover including foam filter package (2)
- Place the cover upside down onto a soft, clean surface, so that the foam filters with the press ring face up (4).
- Remove the press ring by undoing the nut from the pulling rod (4).
To remove the nut, hold the pulling rod using combination pliers.
- Note:** Do not pull the pulling rod out of the cover.
- Pull off the foam filters (5).

- Clean under running water by vigorously compressing and releasing (6). Clean the bioballs, container, cover with meshed tube and press ring under running water (6).
- Push on foam filters such that the pulling rod rests in the recess of the foam filters (7).
- Fit the pressing ring with the rod guidance pointing down, and screw the nut onto the pulling rod (8). To tighten the nut, hold the pulling rod using combination pliers.
BioPress 6000/10000: Ensure that the meshed tube fits completely in the ring diameter.
- Remove the cover sealing ring from the container and check for damage; clean or replace, and place on the top container rim.
- Press on the cover including the foam filter package, allow the closing clamps to engage (9).
- Perform a quick cleaning (see 'quick cleaning').

Cleaning the quartz glass / Replacing the UVC lamp



Attention! Ultra-violet radiation.

Possible consequences: Eye or skin injury from burns.

Protective measures:

- Never operate the UVC lamp outside its housing.
- Never operate the UVC lamp in a housing that is defective.



Attention! Breakable glass.

Possible consequences: Injury of your hands caused by cuts.

Protective measures: Handle both quartz glass and UVC lamp with care.



Note!

A safety switch prevents switching on the UVC lamp as long as the UVC water housing is removed.

Opening the UCV clarifying unit (F)

- Remove the cover from the UVC clarifying unit.
- Turn the UVC clarifying unit counter-clockwise up against the stop (bayonet closure), then carefully pull out of the filter cover including the O ring (1).
- Loosen the self-tapping screw (7) until the the screw tip is sunk in the housing of the clamping screw (2).
- Unscrew the clamping screw counter-clockwise (3).
- Remove the quartz glass including the O ring towards the front with a slight turning movement (4).
- Check the quartz glass and the O ring for damage and replace, if necessary.
- Clean the quartz glass outer face with a moist cloth.

Replacing the UVC lamp (F)

Important: Only use lamps the identification and capacity data of which correspond to the information on the type plate.

For an optimum filter performance, we recommend to replace the UVC lamp after approx. 8,000 operating hours.

- Pull out and replace the UVC lamp.

Assembly of the UVC clarifying unit (F)

- Insert the quartz glass including the O ring against the stop in the unit head (6).
- Press the O ring into the gap between unit head and quartz glass.
- Tighten the clamping screw clockwise up to the stop (7).
- Tighten the self-tapping screw (8).
- Check the O-Ring at the unit head for damage and replace, if necessary (9).
- Carefully push the unit head into the housing while applying slight pressure. Ensure that the tenons at the housing engage in the grooves of the bayonet closure.
- Turn the unit head clockwise against the stop while applying slight pressure.
- Refit the cover for the UVC pre-clarifying unit.

Storage/Over-wintering

- Put the unit out of operation at water temperatures below 8 °C or, at the latest, when freezing temperatures are to be expected.
- Drain and thoroughly clean the unit, check for damage.
- Remove, clean, dry and store all filters in a frost-free environment.
- Ensure that the storage place is inaccessible to children.
- Cover the filter container such that the ingress of rain water is excluded.
- Drain all hoses, pipes and connections as far as possible.

Wear parts

The UVC lamp, the quartz glass and the filters are wear parts and are excluded from the warranty.

Disposal








Do not dispose of this unit with domestic waste! For disposal purposes, please use the return system provided. Disable the unit beforehand by cutting off the cables.

Only dispose of the UVC lamp by using the return system provided for this purpose.

Remedy of faults

Malfunction	Cause	Remedy
The unit performance is not satisfactory	Unit has been in operation only for a short time	The complete biological cleaning effect is only achieved after several weeks
	Water extremely soiled	Remove algae and leaves from the pond, change the water
	Excessive fish and animal population	Guide value: approx. 60 cm fish length in 1 m³ pond water
	Foam filters soiled	Clean filters
	Quartz glass tube soiled	Remove UVC and clean quartz glass
	UVC lamp capacity exhausted	Replace the lamp after approx. 8,000 operating hours
UVC lamp display is not lit	Power supply of Filtoclear-UVC not connected	Connect UVC power plug
	UVC lamp defective	Replace the UVC lamp
	Connection defective	Check electrical connection
	UVC overheated	UVC automatically switches on when cooled down
No water outlet from the pond inlet	Pump power supply not connected	Connect pump power supply
	Pond inlet blocked	Clean pond inlet
	Filter container/pump housing clogged	Clean filter container/pump housing

DE	Type	Abmessungen	Gewicht	Bemessungsspannung	UV-C-Lampe	Leistungsaufnahme	Anschlüsse	Wassertemperatur	Wassersäule
GB	Type	Dimensions	Weight	Rated voltage	UV-C lamp	Power consumption	Connections	Water temperature	Max. head height
FR	Type	Dimensions	Poids	Tension de mesure	Lampe UVC	Puissance absorbée	Raccordements	Température de l'eau	Colonne d'eau
NL	Type	Afmetingen	Gewicht	Dimensioneringsspanning	UV-C-lamp	Vermogensopname	Aansluitingen	Watttemperatuur	Waterkolom
ES	Tipo	Dimensiones	Peso	Tensión asignada	Lámpara UVC	Consumo de potencia	Conexiones	Temperatura del agua	Columna de agua
PT	Tipo	Dimensões	Peso	Voltagem considerada	Lâmpada UVC	Potência absorvida	Conexões	Temperatura da água	Coluna de água
IT	Tipo	Dimensioni	Peso	Tensione di taratura	Lampada UVC	Potenza assorbita	Allacciamenti	Temperatura dell'acqua	Colonna d'acqua
DK	Type	Dimensioner	Vægt	Nominel spænding	UV-C-pære	Effektforbrug	Tilslutninger	Vandtemperatur	Vandsøjle
NO	Type	Mål	Vekt	Merkespenning	UV-lampe	Effektforbruk	Tilkoblinger	Vanntemperatur	Vannøyve
SE	Type	Mått	Vikt	övre märkspänning	UV-C-lampa	Effekt	Anslutningar	Vattentemperatur	Vattenpelare
FI	Tyyppi	Mitat	Paino	mitoitusjännite	UV-C-lamppu	Ottoleho	Liitäntät	Veden lämpötila	Vesipylväs
HU	Típus	Méreték	Súly	mért feszültség	UV-C-lámpa	Teljesítményfelvétel	Csatlakozók	Víz hőmérséklet	Vízoszlop
PL	Type	Wymiary	Ciężar	napięcie znamionowe	Lampa ultrafioletowa	Pobór mocy	Przyłącza	Temperatura wody	Slup wody
CZ	Type	Rozměry	Hmotnost	domovaci napětí	UV-C zářivka	Příkon	Přípojky	Teplota vody	Vodní sloupec
SK	Type	Rozměry	Hmotnosť	dimenzačné napätie	UV-C žiarivka	Prikon	Pripojky	Teplota vody	Vodný slupec
SI	Tip	Dimenzije	Teža	dimenzionirana napetost	UV-C žarnica	Poraba moči	Priključki	Temperatura vode	Vodni stebel
HR	Tip	Dimenzije	Masa	gornji nazivni napon	UV-C-žarulja	Potrošnja energije	Priključci	Temperatura vode	Vodeni stup
RO	Tip	Dimensiuni	Masăă	tensiunea măsurată	Lampă cu ultraviolete	Putele consumată	Conexiuni	Temperatura apei	Coloană de apă
BG	Тип	Размери	Тегло	номинално напрежение	UV-C - лампа	Потребявана мощност	връзки/води	Температурата на водата	Воден стълб
UA	Тип	Розміри	Вага	розрахункова напруга	Ультрафіолетова лампа	Споживання електроенергії	Підключення	Температура води	Водяний стовп
RU	Тип	Размеры	Вес	расчетное напряжение	Коротковолновая УФ-лампа	Потребление мощности	Соединения	Температура воды	Водяной столб
CN	型号	尺寸	重量	设计电压	紫外灯管	功耗	接头	水温	水柱
BioPress	4000	Ø 235 mm x 335 mm	4 kg	~ 230 V, 50 Hz	7 W TCS (UV-C)	11 W	G½ " - G1½ "	+4 ... +35 °C	≤ 2 m
	6000	Ø 350 mm x 450 mm	5 kg		9 W TCS-S (UV-C)	12 W	G1 " - G1½ "		
	10000	Ø 350 mm x 570 mm	6 kg		11 W TCS-S (UV-C)	14 W			

	IP 24				$p_{max} = 0.2 \text{ bar}$		
DE	Schutz gegen das Berühren von gefährlichen Teilen. Spritzwasser-geschützt	Achtung! Gefährliche UVC-Strahlung!	Vor direkter Sonneneinstrahlung schützen.	Bei Frost, das Gerät deinstallieren!	UVC-Vorklärgerät mit einem maximalen Druck von 0,2 bar betreiben.	Nicht mit normalem Hausmüll entsorgen!	Achtung! Lesen Sie die Gebrauchsanleitung
GB	Protection to prevent touching dangerous components. Splashing water protected.	Attention! Dangerous UVC radiation!	Protect from direct sun light.	Remove the unit at temperatures below zero (centigrade).	Operate the UVC clarifying unit at a maximum pressure of 0.2 bar.	Do not dispose of together with household waste!	Attention! Read the operating instructions
FR	Protection contre le contact de pièces dangereuses. Protégé contre les projections d'eau	Attention ! Rayonnement UVC dangereux !	A protéger du rayonnement solaire direct.	Retirer l'appareil en cas de gel.	Utiliser l'appareil de préclarification à UVC avec une pression maximale de 0,2 bar.	Ne pas recycler dans les ordures ménagères !	Attention ! Lire la notice d'emploi
NL	Beveiliging tegen het aanraken van gevaarlijke delen. Spatwaterbescherm	Let op! Gevaarlijke UVC-straling!	Beschermen tegen rechtstreeks zonlicht.	Bij vorst het apparaat deinstalleren!	Gebruik het UVC-voorzuiwingsapparaat met een maximale druk van 0,2 bar.	Niet bij het normale huisvuil doen!	Let op! Lees de gebruiksaanwijzing
ES	Protección contra contacto con las partes peligrosas. A prueba de salpicaduras	¡Atención! Radiación UVC peligrosa.	Proteja-se contra la radiación directa del sol	Desinstale el equipo en caso de heladas.	Opere el equipo preclarificador UVC con una presión máxima de 0,2 bar.	¡No deseches el equipo en la basura doméstica!	¡Atención! Lea las instrucciones de uso
PT	Proteção contra contacto com componentes perigosos. A prova de respingos de água	Atenção! Radiação UVC perigosa!	Proteger contra radiação solar directa.	Em caso de geada, desinstalar o aparelho!	Operar o aparelho de clarificação prévia UVC com uma pressão máxima de 0,2 bar.	Não deitar ao lixo doméstico!	Atenção! Leia as instruções de utilização
IT	Protezione contro il contatto con parti pericolose. Protetto contro gli spruzzi d'acqua	Attenzione! Pericolosa radiazione UVC!	Proteggere contro radiazione solare diretta.	In caso di gelo disinstallare l'apparecchio!	Far funzionare il predepuratore UVC con una pressione massima di 0,2 bar.	Non smaltire con normali rifiuti domestici!	Attenzione! Leggere le istruzioni d'uso!
DK	Beskyttelse mod berøring af farlige dele. Stenkvaldsbeskyttet	Fare! Farlig UVC-stråling!	Beskyt mod direkte solindstråling.	Ålmonter apparatet ved frostvejr!	UVC-forrensesheden må højst anvendes med et tryk på 0,2 bar.	Må ikke bortskaffes med det almindelige husholdningsaffald!	OBS! Læs brugsanvisningen
NO	Beskyttelse mot berøring av farlige deler. Beskyttet mot vannsprut	NB! Farlig UVC-stråling!	Beskytt mot direkte solstråling.	Ved frost, demonter apparatet!	Bruk UVC-forrensere med et maksimalt trykk på 0,2 bar.	Ikke kast i alminnelig husholdningsavfall!	NB! Les bruksanvisningen
SE	Skydd mot beröring av farliga delar. Droppått	Varning! Farlig UVC-strålning!	Skyddas mot direkt solstrålning.	Demontera apparaten innan första frosten!	Använd UVC-förreningen med ett maximalt tryck som uppgår till 0,2 bar.	Får inte kastas i hushållsopparn!	Varning! Läs igenom bruksanvisningen
FI	Vaarallisten osien kosketussuoja. Suojattu roiskevedellä	Huomio! Vaarallinen UVC-säteily!	Suojatava suoralla auringonvalolla.	Laitte on purettava ennen pakkasta.	Käytä UVC-esipuhdistuslaitetta enintään 0,2 bar:n paineella.	Ei saa hävittää tavallisen kotitalousjätteen mukana!	Huomio: Lue käyttöohje
HU	A veszélyes alkatrészek megérintése elleni védő. Vízpermetáló	Figyelem! Veszélyes UVC-sugárzás!	Óvni kell a közvetlen napsugárzástól.	Fagy esetén a készüléket le kell szerelni!	Az UVC-előerítő készülék maximum 0,2 bar nyomással működtesse.	A készülék nem a normál háztartási szeméttel együtt kell megsemmisíteni!	Figyelem! Olvassa el a használati útmutatót
PL	Zabezpieczenie przed dotknięciem niebezpiecznych części. Odporny na spryskanie wodą	Uwaga! Niebezpieczne promieniowanie ultrafioletowe!	Chronić przed bezpośrednim działaniem promieni słonecznych.	W razie mrozu zdeinstalować urządzenie!	Urządzenie oczyszczające z lampą ultrafioletową użytkować pod ciśnieniem nie przekraczającym 0,2 bar.	Nie wyrzucać wraz ze śmieciami domowymi!	Uwaga! Przezytać instrukcję użytkowania!
CZ	Ochrana proti dotyku u nebezpečných častí. Ochrana proti stříkající vodě	Pozor! Nebezpečné ultrafialové záření.	Chrániť pred priamym slnečným žiarením.	Pri mrazu prístroj odinštalovať!	Predfáňný prístroj UVC provozovať s maximálnym tlakom 0,2 bar.	Nelikvidovať v normálnom komunálnom odpadu!	Pozor! Predčítajte Návod k použití!

IP 24

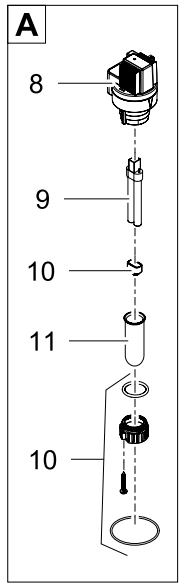
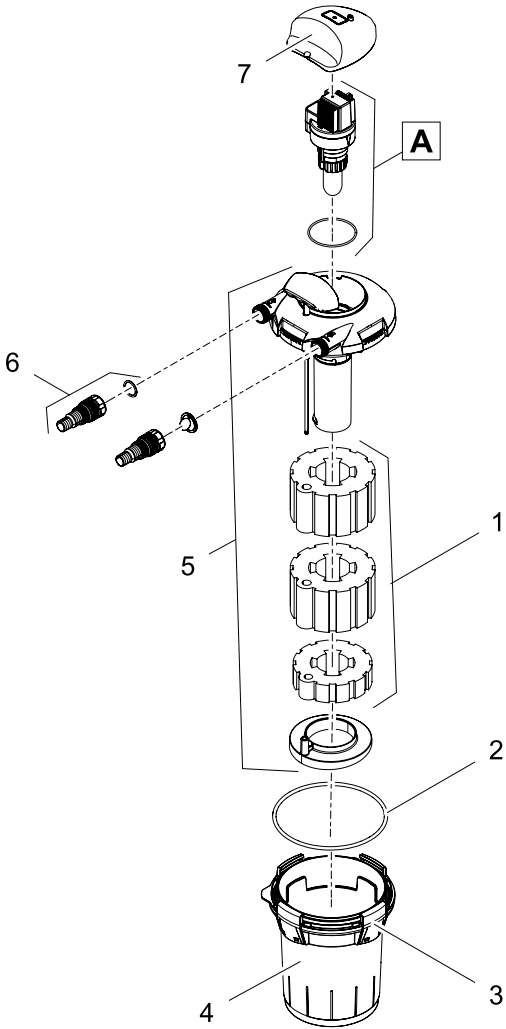


$P_{max} = 0.2 \text{ bar}$

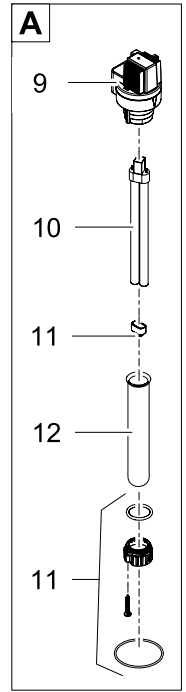
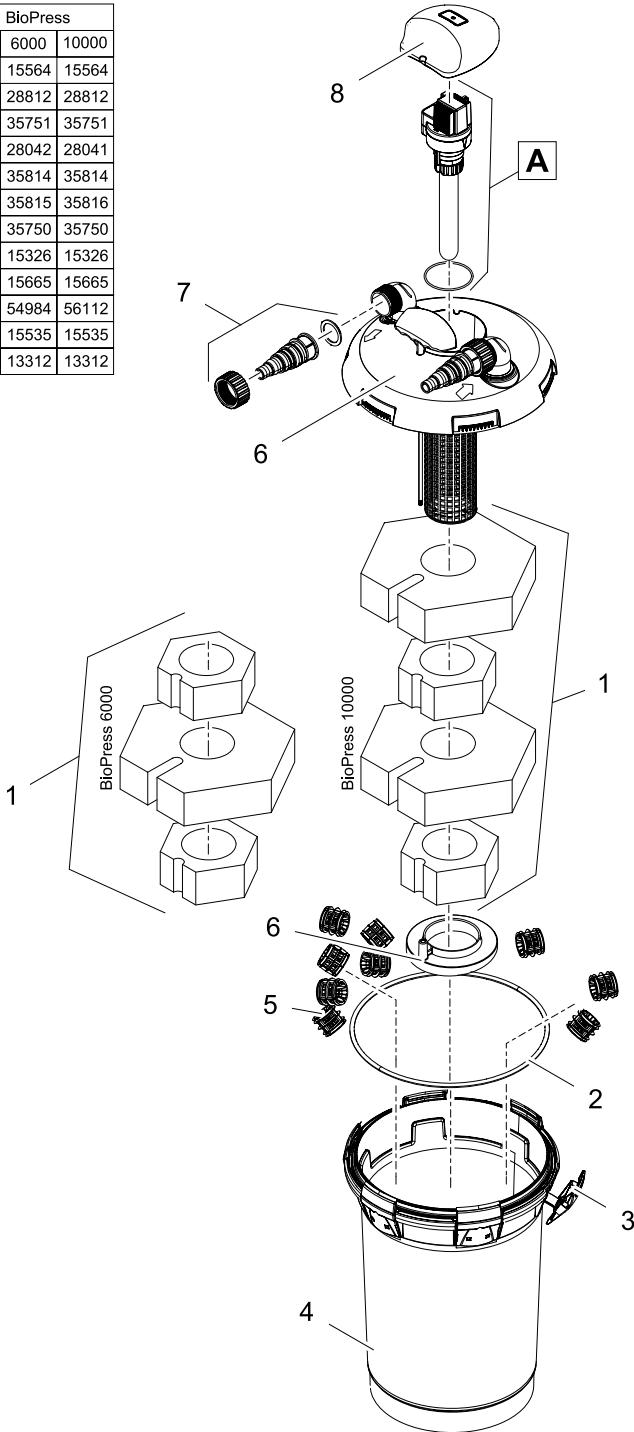


SK	Ochrana proti dotyku nebezpečných častí. Ochrana proti striekajúcej vode	Pozor! Nebezpečné ultrafialové žiarenie.	Chrániť pred priamym slnečným žiarením.	Pri mraze prístroj odinštalovať!	Predradný prístroj UVC prevádzkovať s maximálnym tlakom 0,2 bar.	Nelikvidovať v normálnom komunálnom odpade!	Pozor! Preadajte si Návod na použitie
SI	Zašita pred dotikom nevarnih delov. Zašita pred brizgi vode	Pozor! Nevarno UVC-sevanje!	Pred direktnimi sonnimi - žarki- zašitate.	Ob zmrzali demontirajte napravol	UVC predhodna čistilna naprava sme delovati z najvišjim tlakom 0,2 bar.	Ne zavrzite skupaj z gospodinjiskimi odpadki!	Pozor! Preberite navodila za uporabo!
HR	Zašita od dodira opasnih dijelova prisluga. Zaštiteno od prskanja vode	Pažnja! Opasno UVC zračenje!	Zaštititi od izravnog- sunčevog zračenja.	U slučaju mraza deinstalirajte uređaj!	UVC-uređaj za prethodno čišćenje koristite do maksimalnog tlaka od 0,2 bara.	Nemojte ga bacati u običan kućni otpad!	Pažnja! Pročitajte upute za upotrebu!
RO	Proteje în cazul atingerii componentelor periculoase. Protecție contra stropirii	Atenție! Razdaj ultraviolete periculoase!	Protejați de gazele directe ale soarelui.	În perioadele cu îngheț deinstalați aparatul!	Operați aparatul de limpezire cu o presiune ultraviolete cu o presiune maximă de 0,2 bar.	Nu aruncați în gunoii menajer!	Atenție! Citiți instrucțiunile de utilizare!
BG	Защита срещу досег с опасни части. Защита от напръскване с вода	Внимание! Опасно ултравиолетово лъчение!	Предпазвайте от директнопадане на слънчеви лъчи.	При опасност от измръзване деинсталирайте уреда!	Експлоатиране на UVC-уред за предварително пречистване с максимално налягане от 0,2 бара.	Не изхвърляйте заедно с обикновенния домакински боклук!	Внимание! Прочетете упътването
UA	Захист від контакту з небезпечними деталями. Захищений від водняних бризг	Увага! Небезпечне ультрафіолетове випромінювання!	Охороняти від прямого сонячного випромінювання.	Перед морозами прістрій необхідно демонтувати	Прилад первинного очищення УФ-променями можна застосовувати при тискові максимум 0,2 бар.	Не викидайте разом із побутовим сміттям!	Увага! Читайте інструкцію.
RU	Защита от соприкосновения с опасными частями. Защита от водяных брызг	Внимание! Опасное коротковолновое ультрафиолетовое излучение!	Защищать от прямого воздействия солнечных лучей.	При наступлении морозов прибор демонтировать!	Коротковолновое ультрафиолетовое устройство использовать при давлении максимум 0,2 бар.	Не утилизировать вместе с домашним мусором!	Внимание! Прочитайте инструкцию по использованию
CN	防止接觸危險部件。防止噴水。	注意! 危險的紫外線照射!	防止陽光直射。	霜凍時，拆卸設備！	紫外線預淨化裝置在最高0.2巴的壓力下運行。	不要同普通的家庭垃圾一起處理！	注意! 請閱讀使用說明書。

BioPress	
Pos.	4000
1	15558
2	14543
3	15327
4	14555
5	15561
6	14825
7	15326
8	15665
9	57111
10	15535
11	14193



BioPress		
Pos.	6000	10000
1	15564	15564
2	28812	28812
3	35751	35751
4	28042	28041
5	35814	35814
6	35815	35816
7	35750	35750
8	15326	15326
9	15665	15665
10	54984	56112
11	15535	15535
12	13312	13312





OASE GmbH · www.oase-livingwater.com

Tecklenburger Straße 161 · 48477 Hörstel · Postfach 20 69 · 48469 Hörstel · Germany



14833/08F